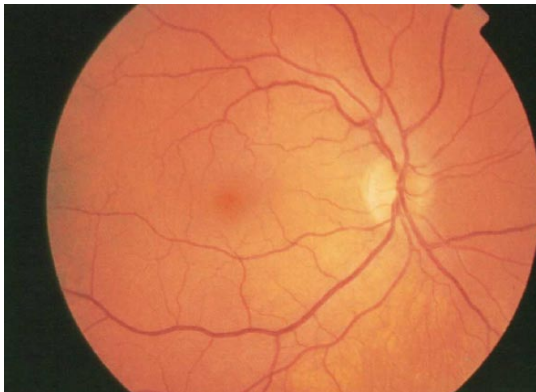




Eye Health after 40

We recommend eye health review every 2 years after reaching age 40

- Digital Retinal Imaging allows us to scan the internal eye and is an invaluable tool in the detection and monitoring of conditions including glaucoma, macular degeneration and diabetic retinopathy. Retinal Imaging is often able to be performed without pupil dilation and is a painless and completely safe procedure for patients. Images are forwarded to general practitioners and ophthalmologists as indicated.



- We have therapeutic endorsement to prescribe topical S4 medications for ocular surface and anterior eye conditions. We are able to treat patients with acute or chronic sore eyes. We co-manage glaucoma with local ophthalmologists.
- Medicare provides for annual eye examinations when required for all patients diagnosed with Diabetes. We are able to provide these examinations as a part of your care plan with your general practitioner and refer on to ophthalmology if any complications arise or treatment is required.
- Medicare provides for threshold Visual Field Assessments for patients with headaches and visual or ocular symptoms which may involve compromise to the visual pathway.

PHONE US TO MAKE AN APPOINTMENT
03 9481 3381

EMAIL US TO MAKE AN APPOINTMENT
maria@fitzroynorththeyecentre.com.au